

# NOTICE OF APPLICATION

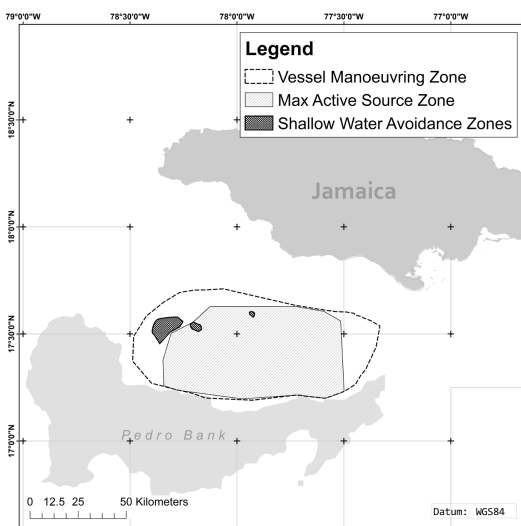


## THE NATURAL RESOURCES CONSERVATION AUTHORITY ACT

### The Natural Resources Conservation (Permits and Licences) (Amended) Regulations 2015

**TULLOW JAMAICA LIMITED**, an Oil and Gas company registered in Jamaica in accordance with the Companies Act of Jamaica, with an established place of business at 7th Floor, Scotiabank Centre, Corner Duke and Port Royal Streets, in the parish of Kingston, hereby applies for an Environmental Permit with Reference No. 2017-01017-EP00329 to conduct exploration activities in the Walton Morant Block. The area for which a permit is required is wholly an area of the southern waters of Jamaica totalling approximately 5340 square kilometres (km<sup>2</sup>) represented by the black dashed line on the map here below, in water depths ranging between 100m and 1500m (meters). Within this area are three shallow water avoidance zones, represented by the hatched shaded areas. The permit is needed for the purpose of conducting a 3 dimensional seismic survey in pursuance of the purpose of oil and gas exploration.

Point Number	Latitude (WGS84)	Longitude (WGS84)
1	17°-13'-14.0971"	-77°-31'-41.7310"
2	17°-13'-56.4695"	-77°-29'-50.9472"
3	17°-15'-53.2201"	-77°-26'-45.9775"
4	17°-18'-26.0330"	-77°-25'-16.0021"
5	17°-19'-55.9675"	-77°-23'-58.3139"
6	17°-26'-19.3460"	-77°-20'-58.3291"
7	17°-32'-15.8469"	-77°-19'-54.2884"
8	17°-33'-45.7608"	-77°-22'-32.8198"
9	17°-34'-26.6845"	-77°-24'-23.4383"
10	17°-34'-58.2217"	-77°-25'-16.3035"
11	17°-35'-12.2863"	-77°-26'-37.1797"
12	17°-35'-47.9809"	-77°-27'-12.1952"
13	17°-36'-10.4404"	-77°-29'-23.9726"
14	17°-36'-16.3280"	-77°-32'-13.9401"
15	17°-36'-57.1198"	-77°-37'-04.3148"
16	17°-38'-04.1760"	-77°-43'-47.4400"
17	17°-42'-39.2529"	-78°-03'-48.8674"
18	17°-42'-21.5419"	-78°-08'-49.6107"
19	17°-42'-19.1435"	-78°-11'-52.8041"
20	17°-41'-38.0303"	-78°-16'-06.7830"
21	17°-38'-55.7906"	-78°-20'-34.3911"
22	17°-35'-01.2647"	-78°-25'-26.3764"
23	17°-29'-21.9327"	-78°-28'-58.9107"
24	17°-22'-21.9762"	-78°-29'-16.8808"
25	17°-16'-12.3057"	-78°-23'-57.9192"
26	17°-14'-22.8367"	-78°-16'-59.8249"
27	17°-13'-20.7497"	-78°-12'-21.3584"
28	17°-12'-02.9113"	-78°-08'-51.4041"
29	17°-11'-26.7091"	-77°-55'-39.6964"
30	17°-12'-51.2850"	-77°-43'-42.7594"
31	17°-12'-52.9684"	-77°-42'-24.8717"
32	17°-12'-40.9825"	-77°-41'-44.3919"
33	17°-11'-59.3355"	-77°-35'-12.1963"
34	17°-13'-14.0971"	-77°-31'-41.7310"



Schematic Map showing the area (within shaded and dashed line) for which the permit is sought.  
 Dated the 8th of December, 2017  
**Tullow Jamaica Ltd**

#### CONTACT INFORMATION:

**Tullow Jamaica Ltd,**  
 Joachim Vogt, Country Representative,  
 7th Floor, Scotiabank Centre  
 Corner Duke and Port Royal Streets, Kingston  
 email: Joachim.vogt@tulloil.com